

Old Time Fiddle Tunes For Fiddle and Mandolin, Volume 1
by Peter Martin

Please Read First

This book is distributed using the shareware system. Try it out, if you like it please send me \$10.00. Go to www.petimarpress.com for payment info, or send to

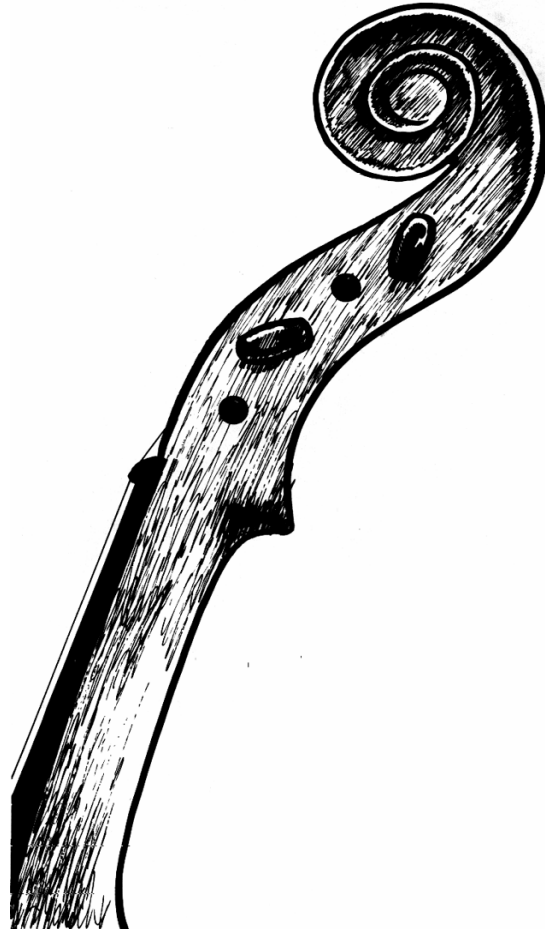
Pete Martin
PO Box 33482
Seattle, WA 98133
206-367-9756
www.petimarpress.com
email: pete@petimarpress.com

If you prefer PayPal, email me and I'll bill you that way.

Feel free to copy and distribute to others. See my web site for other instruction materials for fiddle and mandolin.

Copyright© 1995 by Peter Martin

Old Time Fiddle Tunes



For

Fiddle and Mandolin

In Music Notation and Mandolin Tablature

Volume 1

By Peter Martin

Old Time Fiddle Tunes

For

Fiddle and Mandolin

Volume 1

Copyright© 1995 by Peter Martin

No part of this publication and/or recording can be duplicated or used in any other way without written permission of the author.

TABLE OF CONTENTS

| | |
|---|----|
| Introduction..... | 5 |
| Amazing Grace..... | 7 |
| Arkansas Traveler..... | 8 |
| Ash Grove..... | 9 |
| Bill Cheatum..... | 10 |
| Billy in the Lowground..... | 11 |
| Blackberry Blossom..... | 12 |
| Boil Them Cabbage Down..... | 13 |
| Cherokee Shuffle..... | 14 |
| Cold Frosty Morning..... | 15 |
| Colored Aristocracy..... | 53 |
| Cripple Creek..... | 16 |
| Devils Dream..... | 17 |
| Eighth of January..... | 18 |
| Fire on the Mountain..... | 19 |
| Fishers Hornpipe..... | 20 |
| Flop Eared Mule..... | 21 |
| Forked Deer..... | 22 |
| Girl I Left Behind Me..... | 23 |
| Golden Slippers..... | 24 |
| Growling Old Man and Grumbling Old Woman..... | 25 |
| High Level Hornpipe..... | 57 |
| Irish Washer Woman..... | 58 |
| June Apple..... | 26 |
| Liberty..... | 27 |
| Mason's Apron..... | 28 |
| Mississippi Sawyer..... | 48 |
| Muddy Roads..... | 29 |
| Old Joe Clark..... | 30 |
| Over The Waterfall..... | 31 |
| Piper's Creek..... | 50 |
| Rachel..... | 56 |
| Red Apple Rag..... | 32 |
| Red Haired Boy..... | 33 |
| Rites of Man..... | 34 |
| Sailor's Hornpipe..... | 35 |
| Saint Anne's Reel..... | 36 |
| Salt Creek..... | 37 |
| Saratoga Hornpipe..... | 38 |
| Sibaeg Simor..... | 39 |
| Smiths Reel..... | 40 |
| Soldiers Joy..... | 41 |
| Stones Rag..... | 42 |

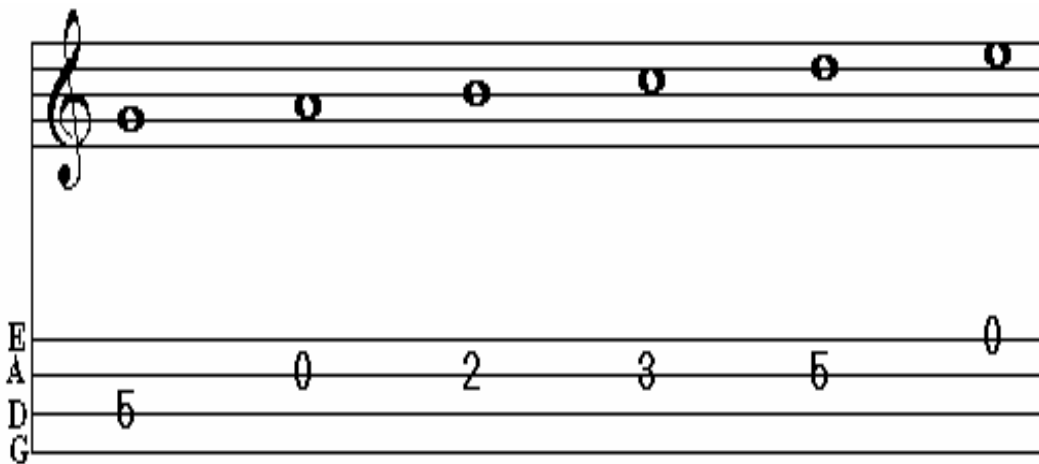
| | |
|----------------------------------|----|
| Stony Point..... | 43 |
| Swallow Tail Jig..... | 44 |
| Texas Gales..... | 51 |
| Tune from My Seventh Album..... | 55 |
| Turkey in the Straw..... | 45 |
| Whiskey Before Breakfast..... | 46 |
| Wind That Shakes The Barley..... | 47 |
| Woodchopper's Reel..... | 49 |

Introduction

This book is a collection of common old time fiddle tunes. These are tunes you will hear played at many Bluegrass and Old Time music jams. The tunes collected here in Volume 1 are designed for beginning and intermediate level players. Volume 2 of this series are more advanced versions.

The tunes are written in standard music notation and mandolin tablature. Each instrument plays the same notes. This way, both instruments can learn the same version of the tune and play them easily together.

The standard music notation is on the top staff and the mandolin tablature is on the bottom staff.



The mandolin tablature (sometimes abbreviated *tab*) represents the four string pairs on the mandolin. When you see a number, it means play that string at that fret. Thus, in the tablature above, the first note is 5 on the D string. That means play the fifth fret on the D string. If you have any trouble reading standard music notation or mandolin tablature, I suggest purchasing one of the good instruction books on the market.

Some tunes are very easy, some more difficult. When learning each tune, play through the music slowly, and fiddlers, closely watch the bow directions!

I would appreciate any comments you may have on this book. Drop me a line at the address on the next page.

Thank you and good music to all.

About the Author

Pete Martin is a musician living in Seattle, Washington. He has taught fiddle, mandolin, guitar and tenor guitar professionally since 1980. Pete plays Bluegrass, Texas style old-time fiddle and Jazz.

Pete has performed and recorded with many Northwest artists. With the Skyline Drifters he appeared on the Nashville Network Bluegrass show “Fire on the Mountain”.

Pete has won or placed near the top in many regional and national instrumental competitions. In 1983, Pete placed in the top 5 at the Walnut Valley Mandolin Contest, Winfield, Kansas. In 1994, Pete was Adult Division National Fiddle Champion, held each year at Weiser Idaho.

Collecting and transcribing tunes and solos has been a hobby of his for years. At the suggestion of students and friends, Pete founded Petimar Press in 1994 to publish some of his collections. A list of available publications is at www.petimarpress.com , or contact Pete:

Pete Martin
PO Box 33482
Seattle, WA 98133
206-367-9756
email: pete@petimarpress.com

Amazing Grace

Traditional

Fiddle

Mandolin Tablature

D V

G D

2 0 4 4 2 0 4 2 2

This system contains the first two measures of the piece. The top staff is a treble clef with a key signature of two sharps (F# and C#) and a 3/4 time signature. The melody consists of quarter notes: D4, E4, F#4, G4, A4, B4, C#5, and D5. The bottom staff is a mandolin tablature with fret numbers 2, 0, 4, 4, 2, 0, 4, 2, and 2. Chord diagrams for D and G are shown above the staff.

A

0 4 4 0 0 0 4

This system contains measures 3 and 4. The melody continues with quarter notes: D4, E4, F#4, G4, A4, B4, C#5, and D5. The bottom staff has fret numbers 0, 4, 4, 0, 0, 0, and 4. A slur is placed over the last two notes of the melody and the last two fret numbers of the tablature. A chord diagram for A is shown above the staff.

D G D

0 4 0 2 4 0 2 2

This system contains measures 5 and 6. The melody continues with quarter notes: D4, E4, F#4, G4, A4, B4, C#5, and D5. The bottom staff has fret numbers 0, 4, 0, 2, 4, 0, 2, and 2. Chord diagrams for D, G, and D are shown above the staff.

A D

0 4 4 2 0 0

This system contains measures 7 and 8. The melody continues with quarter notes: D4, E4, F#4, G4, A4, B4, C#5, and D5. The bottom staff has fret numbers 0, 4, 4, 2, 0, and 0. A slur is placed over the last two notes of the melody and the last two fret numbers of the tablature. Chord diagrams for A and D are shown above the staff.

Arrangement ©1995 by Pete Martin
All Rights Reserved

www.petimarpress.com

Arkansas Traveler

Traditional

Fiddle

D G A D A

Mandolin Tablature

D G A D A D

Mandolin Tablature

D G D A D A D A

Mandolin Tablature

D G D A D A D

Mandolin Tablature

Arrangement ©1995 by Pete Martin
All Rights Reserved

www.petimarpres.com

The Ash Grove

Traditional

Fiddle

Chords: G, Em, Am, D, Em, C, G, D, G

Musical notation for fiddle in G major, 3/4 time. The staff shows a sequence of notes with bowing directions (V for up-bow, ▭ for down-bow). The notes are: G4, A4, B4, A4, G4, F#4, E4, D4, C4, B3, A3, G3, F#3, E3, D3, C3, B2, A2, G2.

Mandolin Tablature

Chords: G, Em, Am, D, Em

Tablature: 0 5 2 5 3 | 2 5 5 | 0 3 2 0 5 | 4 0 0 | 5 2 0 5 3 | 2 5 2 | 0 5 4 | 5

Chords: G, D, A, D, G, Em, Am

Tablature: 2 0 5 | 0 5 4 | 5 0 | 5 2 5 3 | 2 5 5 | 0 3 2 0 5

Chords: D, Em, C, G, D, G

Tablature: 4 0 0 | 5 2 0 5 3 | 2 5 2 | 0 5 4 | 5

Arrangement ©1995 by Pete Martin
All Rights Reserved

www.petimarpress.com

Bill Cheatum

Traditional

Fiddle

Mandolin Tablature

Mandolin Tablature

Mandolin Tablature

Mandolin Tablature

Arrangement ©1995 by Pete Martin
All Rights Reserved

www.petimarpress.com

Billy in the Lowground

Traditional

Fiddle

Mandolin Tablature

Mandolin Tablature

Mandolin Tablature

Mandolin Tablature

Arrangement ©1995 by Pete Martin
All Rights Reserved

Blackberry Blossom

Traditional

Fiddle

Mandolin Tablature

Arrangement ©1995 by Pete Martin
All Rights Reserved

www.petimarpress.com

Boil Them Cabbage Down

Traditional

Fiddle

Mandolin Tablature

This system contains the first two staves of music. The top staff is a fiddle line in treble clef with a key signature of two sharps (F# and C#) and a common time signature. It features a series of eighth-note patterns. Above the staff are four chord diagrams for A, D, A, and E. The bottom staff is a mandolin tablature line with fret numbers (4, 5, 4, 2) and repeat signs. The letters E, A, D, and G are written vertically to the left of the staff.

This system contains the next two staves of music. The top staff continues the fiddle melody with eighth-note patterns. Above the staff are five chord diagrams for A, D, A, E, and A. The bottom staff continues the mandolin tablature with fret numbers (4, 5, 4, 2, 2, 0, 0, 0, 0, 0, 0) and repeat signs.

This system contains the next two staves of music. The top staff continues the fiddle melody with eighth-note patterns. Above the staff are three chord diagrams for A, D, and A. The bottom staff continues the mandolin tablature with fret numbers (2, 0, 4, 0, 2, 0, 2, 4, 5, 2) and repeat signs.

This system contains the final two staves of music. The top staff continues the fiddle melody with eighth-note patterns. Above the staff are five chord diagrams for A, D, A, E, and A. The bottom staff continues the mandolin tablature with fret numbers (2, 0, 4, 0, 4, 4, 4, 2, 2, 2, 0, 0, 0, 0, 0, 0) and repeat signs.

Arrangement ©1995 by Pete Martin
All Rights Reserved

www.petimarpres.com

Cherokee Shuffle

Traditional

Fiddle

First system of Fiddle notation. The staff contains a treble clef, a key signature of two sharps (F# and C#), and a 2/4 time signature. The melody consists of eighth and sixteenth notes with various accents and slurs. Below the staff is a mandolin-style tablature with fret numbers (0, 2, 4, 5) and a repeat sign.

Mandolin Tablature

Second system of Mandolin Tablature. The staff contains a treble clef, a key signature of two sharps, and a 2/4 time signature. The melody is similar to the fiddle part. Below the staff is a mandolin-style tablature with fret numbers (5, 2, 7, 2, 5, 2, 0, 2, 3, 2, 0, 5, 4, 2, 0, 2, 4, 2, 0, 4, 2, 0, 2, 4, 0, 2, 0) and a repeat sign.

Third system of Mandolin Tablature. The staff contains a treble clef, a key signature of two sharps, and a 2/4 time signature. The melody continues with eighth and sixteenth notes. Below the staff is a mandolin-style tablature with fret numbers (5, 3, 2, 5, 2, 4, 5, 7, 5, 2, 0, 2, 0, 5, 4, 5, 3, 2, 5, 2, 4, 5, 7, 5, 2) and a repeat sign.

Fourth system of Mandolin Tablature. The staff contains a treble clef, a key signature of two sharps, and a 2/4 time signature. The melody continues with eighth and sixteenth notes. Below the staff is a mandolin-style tablature with fret numbers (0, 2, 0, 5, 3, 2, 5, 2, 4, 5, 7, 5, 2, 0, 2, 0, 5, 4, 4, 2) and a repeat sign.

Fifth system of Mandolin Tablature. The staff contains a treble clef, a key signature of two sharps, and a 2/4 time signature. The melody concludes with eighth and sixteenth notes. Below the staff is a mandolin-style tablature with fret numbers (0, 0, 2, 4, 0, 2, 5, 2, 5, 2, 0, 4, 0, 4, 2, 0, 2, 4, 0, 2, 0) and a repeat sign.

Arrangement ©1995 by Pete Martin
All Rights Reserved

www.petimarpress.com

Cold Frosty Morning

Traditional

Fiddle

Am G

Mandolin Tablature

Am G Am

A G E

Am C Dm E Am G Am

Arrangement ©1995 by Pete Martin
All Rights Reserved

www.petimarpress.com

Cripple Creek

Traditional

Fiddle

A D A

Mandolin Tablature

E A

A

E A

Arrangement ©1995 by Pete Martin
All Rights Reserved

www.petimarpres.com

Devil's Dream

Traditional

Fiddle

Mandolin Tablature

Arrangement ©1995 by Pete Martin
All Rights Reserved

www.petimarpres.com

Eighth of January

Traditional

Fiddle

Mandolin Tablature

Mandolin Tablature

Mandolin Tablature

Mandolin Tablature

Arrangement ©1995 by Pete Martin
All Rights Reserved

www.petimarpress.com

Fire on the Mountain

Traditional

Fiddle

Mandolin Tablature

Arrangement ©1995 by Pete Martin
All Rights Reserved

www.petimarpres.com

Fisher's Hornpipe

Traditional

Fiddle

D G D G D G D A

0 4 | 5 0 | 4 0 5 2 0 | 5 | 4 0 4 0 5 2 0 | 5 | 4 0 4 0 5 2 0 | 5 | 4 7 5 4 2 | 0 4

Mandolin Tablature

D G D G A D

5 0 | 4 0 5 2 0 | 5 | 4 0 4 0 5 2 0 | 5 | 0 2 4 5 0 2 3 0 | 2 5 7 4 5

A D A E A

4 5 | 7 4 0 4 | 0 2 3 0 | 2 5 0 5 2 5 3 2 | 0 4 0 4 | 0 2 3 2 | 0 5 4 2 0 5 3

G D G A D

2 5 0 5 | 2 4 5 2 | 0 4 0 4 7 0 5 0 | 2 5 4 2 0 5 4 2 | 0 5 0 4 0

Arrangement ©1995 by Pete Martin
All Rights Reserved

www.halcyon.com/petimar

Flop Eared Mule

Traditional

Fiddle

Mandolin Tablature

Arrangement ©1995 by Pete Martin
All Rights Reserved

www.petimarpres.com

Forked Deer

Traditional

Fiddle

Mandolin Tablature

Mandolin Tablature

Mandolin Tablature

Mandolin Tablature

Arrangement ©1995 by Peter Martin
All Rights Reserved

www.halcyon.com/petimar

The Girl I Left Behind Me

Traditional

Fiddle

Mandolin Tablature

Mandolin Tablature

Mandolin Tablature

Mandolin Tablature

Arrangement ©1995 by Pete Martin
All Rights Reserved

www.petimarpress.com

Golden Slippers

Fiddle

D Traditional A

Mandolin Tablature

D

D G

A 1. D

2. D

Arrangement ©1995 by Pete Martin
All Rights Reserved

www.petimarpress.com

Growling Old Man, Grumbling Old Woman

Traditional

Fiddle

Am G Am E Am

Mandolin Tablature

Am G Am E Am

Am G Am E Am

A G A E A

Am G Am E Am

Arrangement Copyright 1995 by Pete Martin

June Apple

Traditional

Fiddle

Mandolin Tablature

Arrangement ©1995 by Peter Martin
All Rights Reserved

www.halcyon.com/petimar

Liberty

Traditional

Fiddle

Mandolin Tablature

Mandolin Tablature

Mandolin Tablature

Mandolin Tablature

Arrangement ©1995 by Pete Martin
All Rights Reserved

www.petimarpress.com

Mason's Apron

Traditional

Fiddle

Mandolin Tablature

Mandolin Tablature

Mandolin Tablature

Mandolin Tablature

Arrangement ©1995 by Peter Martin
All Rights Reserved

www.halcyon.com/petimar

Muddy Roads

Traditional

Fiddle

G D

0 2 | 5 5 0 2 5 0 2 | 5 5 0 2 5 0 2 | 5 5 0 2 5 0 2 | 3 2 0 | 5 4 0 0 2

Detailed description: This system shows the first four measures of the fiddle part. The key signature has one sharp (F#) and the time signature is common time (C). The notes are: M1: G4, A4, B4, A4, G4; M2: G4, A4, B4, A4, G4; M3: G4, A4, B4, A4, G4; M4: G4, A4, B4, A4, G4. The tablature below the staff shows the fret numbers for each measure.

Mandolin Tablature

G D

5 5 0 2 5 0 2 | 5 5 0 2 5 0 2 | 5 5 0 2 5 0 2 | 3 2 0 | 5 4 0

Detailed description: This system shows the first four measures of the mandolin part. The notes are: M1: G4, A4, B4, A4, G4; M2: G4, A4, B4, A4, G4; M3: G4, A4, B4, A4, G4; M4: G4, A4, B4, A4, G4. The tablature below the staff shows the fret numbers for each measure.

A D

2 5 2 0 | 5 0 2 | 3 2 0 | 5 4 0 | 4 5 4 2 0 2 4 | 5 2 0 | 5 4 0

Detailed description: This system shows the fifth and sixth measures of the fiddle part. The notes are: M5: A4, B4, C5, B4, A4; M6: A4, B4, C5, B4, A4. The tablature below the staff shows the fret numbers for each measure.

A D

2 5 2 0 | 5 0 2 | 3 2 0 | 5 4 0 | 4 5 4 2 0 2 4 | 5 2 0 | 5 4 0

Detailed description: This system shows the fifth and sixth measures of the mandolin part. The notes are: M5: A4, B4, C5, B4, A4; M6: A4, B4, C5, B4, A4. The tablature below the staff shows the fret numbers for each measure.

Arrangement ©1995 by Peter Martin
All Rights Reserved

www.halcyon.com/petimar

Old Joe Clark

A Traditional E

Fiddle

E
A
D
G

Mandolin Tablature

A E A

A G

A E A

Arrangement ©1995 by Pete Martin
All Rights Reserved

www.petimarpres.com

Over The Waterfall

Traditional

Fiddle

Mandolin Tablature

Arrangement ©1995 by Pete Martin
All Rights Reserved

www.petimarpres.com

Red Apple Rag

Traditional

Fiddle

G C

E
A
D
G

Mandolin Tablature

D G D G

0 4 0 5 2 4 5 0 2 0 2 5 2 0 5 2 3 2 0 5 3 2 0 4 5 2 0 4 5

G C

0 2 5 3 5 2 5 3 2 3 5 7 3 5 3 0 3 0 5 3 2 3 5 0 3 0 5 3 2 0 5

D G D G

0 4 0 5 2 4 5 0 2 0 2 5 2 0 5 2 3 2 0 5 3 2 0 4 5 2 0 4 5

Red Haired Boy

Fiddle

Traditional

A D A G

Mandolin

A D A E A

Em D A G

A D A E A

Arrangement ©1995 by Pete Martin
All Rights Reserved

www.petimarpres.com

Rites of Man

Fiddle

Em Traditional D

Mandolin Tablature

5 0 2 3 0 2 5 7 4 5 2 4 5 0 2 0 2 3 2 0 5 7 5 3 2 3 2 0 0 5 0

Em B7 Em

2 3 0 2 5 7 4 5 2 4 5 0 2 0 2 3 2 0 5 2 3 2 3 2 0 2 2

Em D

3 5 7 5 3 2 0 2 3 5 7 5 3 2 0 3 2 3 0 2 5 0 2 3 5 2 5 2 5 3 2

Em B7 Em

0 2 2 2 3 2 5 2 7 2 5 2 3 0 2 3 2 0 5 2 3 2 3 2 0 2 2

Arrangement ©1995 by Pete Martin
All Rights Reserved

www.petimarpres.com